

# Complex Systems and Changes: *Water and Life*

- A "Frontiers of Science" event -

Taormina, Sicily (Italy)

29-31 October 2008

**Life** on Earth is based, in its most simple form, on a few key chemical components, and the main one is Water.

**Water** plays a pivotal role in many complex systems studied in the natural sciences. But at the present time, water is also a threatened resource that will pose socio-economic and strategic challenges in the near future.

This joint ESF-COST event is dedicated to the link between water and life in all its diversity and complexity. The following topics will be covered:

- **origin of life**
- **water & life in extreme environments**
- **changes in the anthropocene**
- **future challenges**

*By bringing together scientists from different fields for discussions on the most recent developments and remaining challenges, it is envisaged that the joint ESF-COST conferences will act as a discussion forum and a catalyst for initiating new lines of research throughout Europe and the world.*



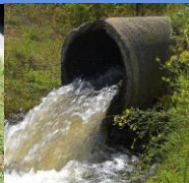
Major scientific advances in science are made when different disciplines meet and integrative approaches are taken. ESF and COST have identified the "Frontiers of Science" event "**Water and Life**" as the first theme of common interest to be explored in the conference cycle "Complex Systems and Changes".

#### List of confirmed Speakers:

Tom Battin, AT  
Jérôme Benveniste, IT  
John Baross, US  
Brent Christner, US  
Anny Cazenave, FR  
Paul Dando, UK  
Richardson Dilworth, US  
Cynan Ellis-Evans, UK  
Jan Erisman, NL  
Federico Fierli, IT  
Yves Godderis, FR  
Arjan Hoekstra, NL  
Pavel Kabat, NL  
Anna Ledin, DK  
Berrien Moore III, US  
Bernd M. Rode, AT  
Carol Turley, UK  
Terje Tvedt, NO  
Günter von Kiedrowski, DE  
Peter van Oevelen, NL  
Tanja Zegers, NL

[www.esf.org/waterlife](http://www.esf.org/waterlife)  
[www.cost.esf.org](http://www.cost.esf.org)  
[waterlife@esf.org](mailto:waterlife@esf.org)

Photos: Courtesy of [www.sxc.hu](http://www.sxc.hu), USDA NRCS, and NASA/NSSDC



## Complex Systems and Changes: *Water and Life*

### – Invitation for Applications for LESC Travel Grants –

**Complex Systems and Changes: Water and Life** – a “Frontiers of Science” event will be held on 29-31 October 2008 in Taormina, Sicily (Italy) ([www.esf.org/waterlife](http://www.esf.org/waterlife)). The event is supported by the European Science Foundation (ESF), the intergovernmental initiative for European COoperation in the field of Scientific and Technical Research (COST), the COST Earth System Science and Environmental Management Domain (ESSEM) and the ESF Life, Earth, and Environmental Sciences (LESC) Standing Committee.

A limited number of travel grants are available from the LESC Standing Committee. They are principally aimed at young European researchers to support their active participation in this event. These Travel Grants will be **up to 500 Euros each**. Please note that board and lodging will be covered for all participants.

#### Application procedure

Applications should include the following elements:

- Curriculum vitae (two pages maximum), including a list of 5 recent publications;
- Details of the applicant's institution (full contact details);
- Title, authors list and abstract (300 words maximum) of the submitted poster presentation;
- short statement (1 page maximum) indicating scientific motivation and expected benefits from the event

Applications should be submitted to [waterlife@esf.org](mailto:waterlife@esf.org) using the downloadable template (see [www.esf.org/waterlife](http://www.esf.org/waterlife)) before **25<sup>th</sup> September 2008, 12:00 (CET)**.

#### Evaluation procedure

The evaluation of applications will be coordinated internally by LESC on the basis of the following criteria and in line with the general ESF policy and mission:

- Academic and scientific track records of the applicant;
- Potential impact of participation for the applicant.

#### Support and Reporting

Travel will be refunded on the basis of actual costs (for economy class fares) up to a maximum of 500 EUR. The reimbursement of travel costs is subject to the submission of a short scientific report (4 pages maximum), and to approval of the report by LESC. In the scientific report, grantees are expected to include a short description of the topics and highlights, their views on the scientific presentations and discussions, and the benefits they have gained or will gain in the near future from their participation in this event, especially in terms of new collaboration and new research ideas.

The scientific report should be submitted to [waterlife@esf.org](mailto:waterlife@esf.org) within 4 weeks of the event (by 28 November 2008 at the latest), along with the completed ESF Travel Claim Form (see [www.esf.org/waterlife](http://www.esf.org/waterlife)) and all original travel tickets and receipts.

**For further information:** Please contact us at [waterlife@esf.org](mailto:waterlife@esf.org)